

Eq-Haler[®]

Inhaler Delivery Device



DESCRIPTION:

The Eq-Haler is a polyamide spacer to be used with metered dose inhalers.

Multi-Use: Purchase only the refills for chronic cases.

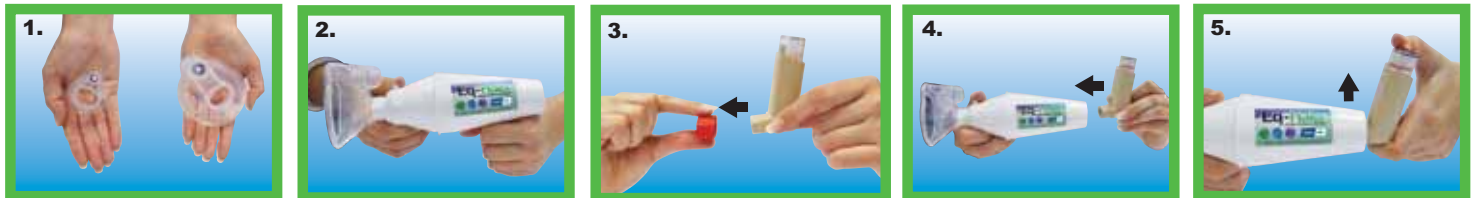
FlowGate Valve: One way valve makes it easier to administer.

Inhaler medication to be used with the Eq-Haler needs to be purchased from your veterinarian or on a veterinary prescription from your pharmacy.

DEVICE CLEANING:

1. Separate the two halves of the device.
2. Clean the mask and both portions of the device from the inside with a lint free absorbent cloth.
3. Sterilize Eq-Haler with cold sterilizing fluid if used on more than one animal.
4. After cleaning, dry and join the two halves.

ADMINISTRATION:



1. Choose the size of the mask that suits the animal.
2. Attach the mask to the spacer.
3. Shake the inhaler two to three times before use and remove the cap. The inhaler must be primed before the first use, and when it has not been used for more than two weeks. To prime, hold the inhaler in the upright position and test fire two actuations (puffs) away from your face.
4. Attach the inhaler to the other end of the spacer.
5. The inhaler should be positioned above the body of the device

HORSES : Large mask



OR

LARGE DOGS: Large mask

SMALL & MEDIUM DOGS: Small mask

CATS: Small mask



6. Place the mask of the Eq-Haler on the nostril of the horse as in the figure above. Watch the horse's breathing pattern and press the inhaler on early inspiration. The opposite nostril can be blocked to facilitate inhalation of the medication. Repeat on successive inhalations until the horse receives the required number of puffs to complete the required dose.

6. Place the mask of the Eq-Haler over the nose of the animal as in the figures above. Watch the animal's breathing pattern and press the inhaler on early inspiration. In the case of nervous animals the inhaler can be actuated away from the animal and then placed over the nose within 20 seconds. Keep the Eq-Haler in place for at least 5 breaths to ensure that the inhaled medication is all inspired. Repeat on successive inhalations until the animal receives the required number of puffs to complete the required dose.

MANUFACTURED BY:

Cipla Vet (Pty) Ltd. Reg. No. 2001/017471/07,
Rosen Heights, Pasita Street, Rosen Park, Bellville, 7530.
Tel. 0861 115 037, Fax 0861 115 038.

E-mail: info@ciplavet.co.za Website: www.ciplavet.co.za

FOR FULL PARTICULARS SEE ENCLOSED PACKAGE INSERT.

Cipla Vet

ANIMAL HEALTH